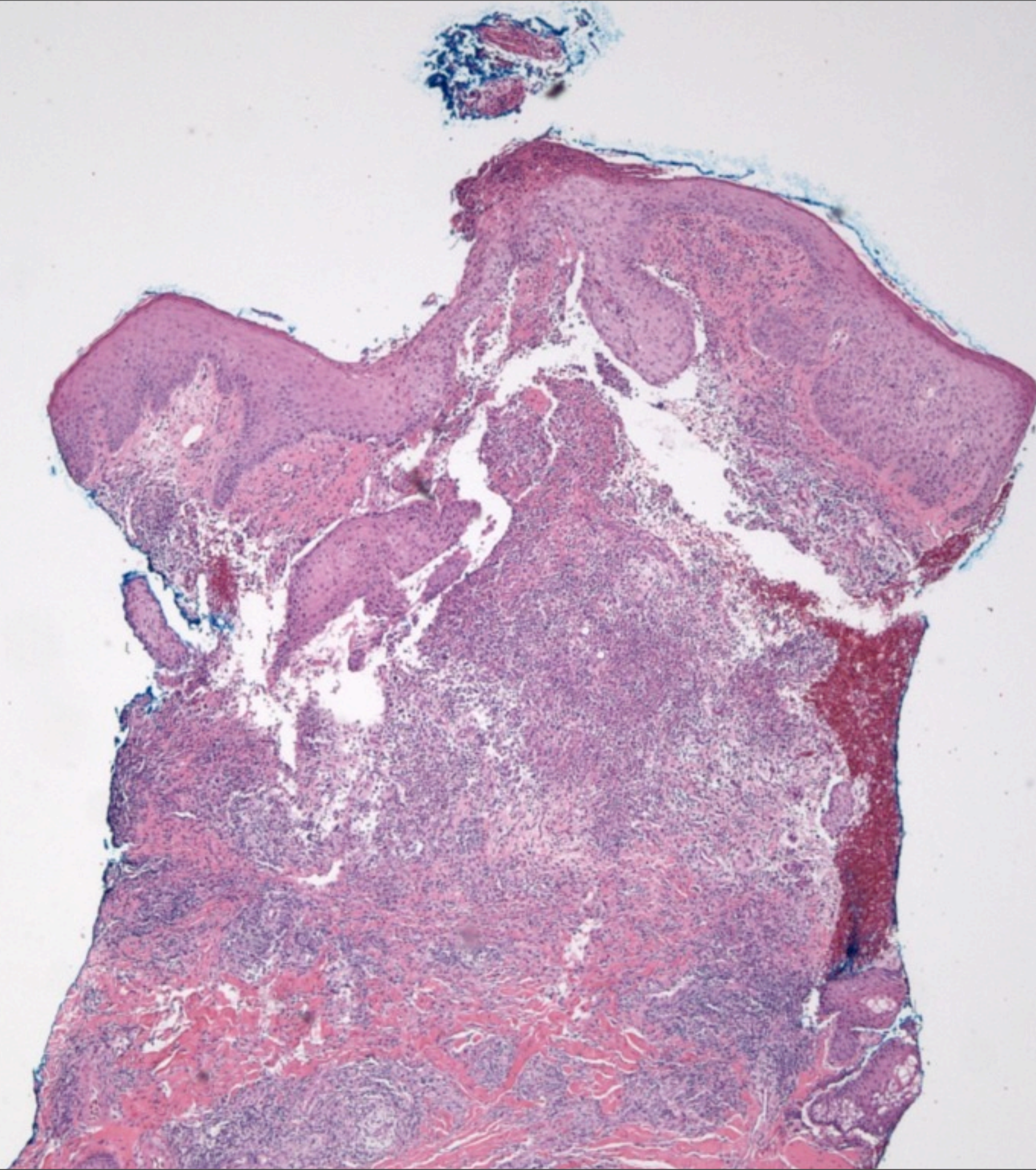
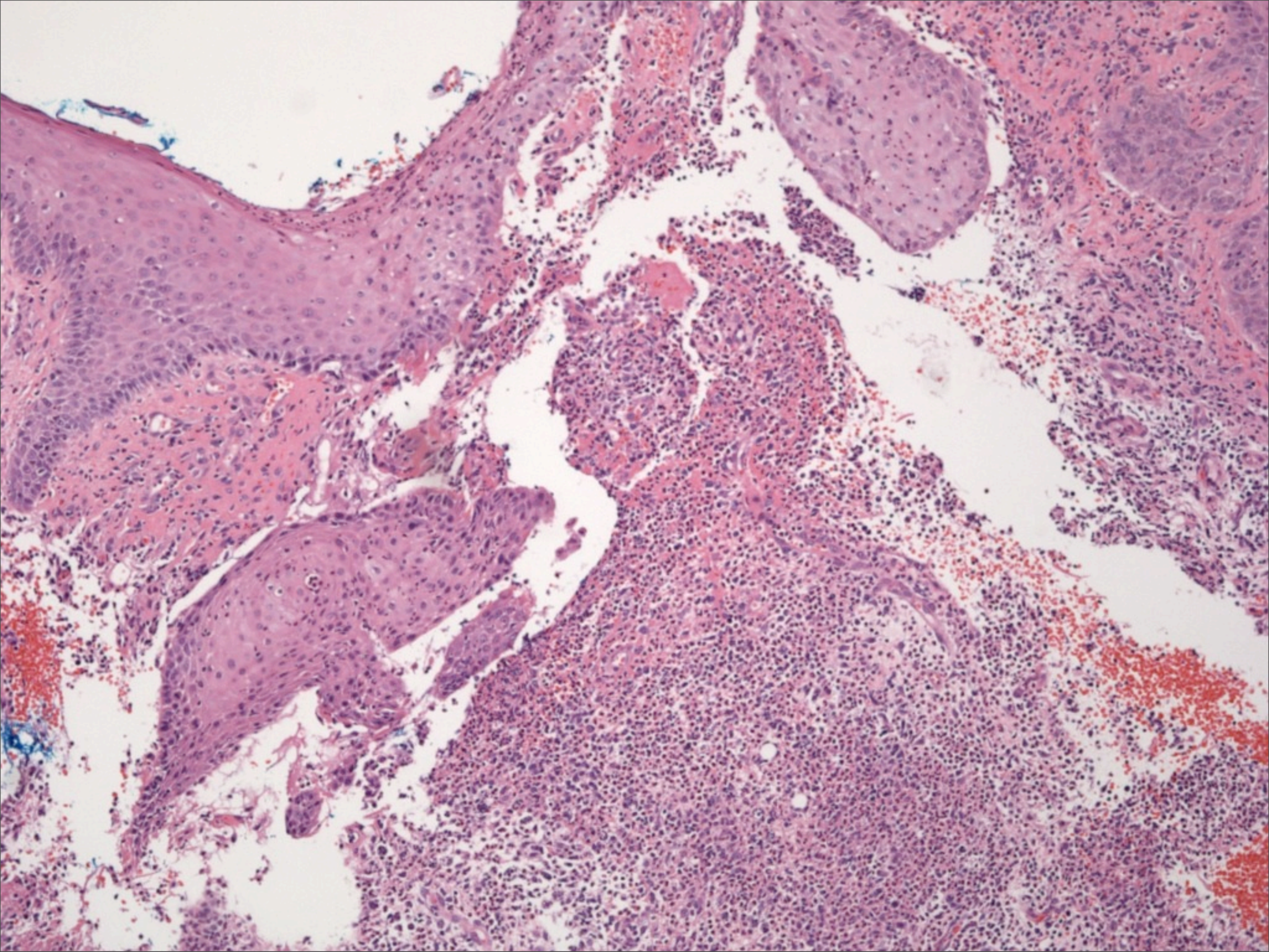


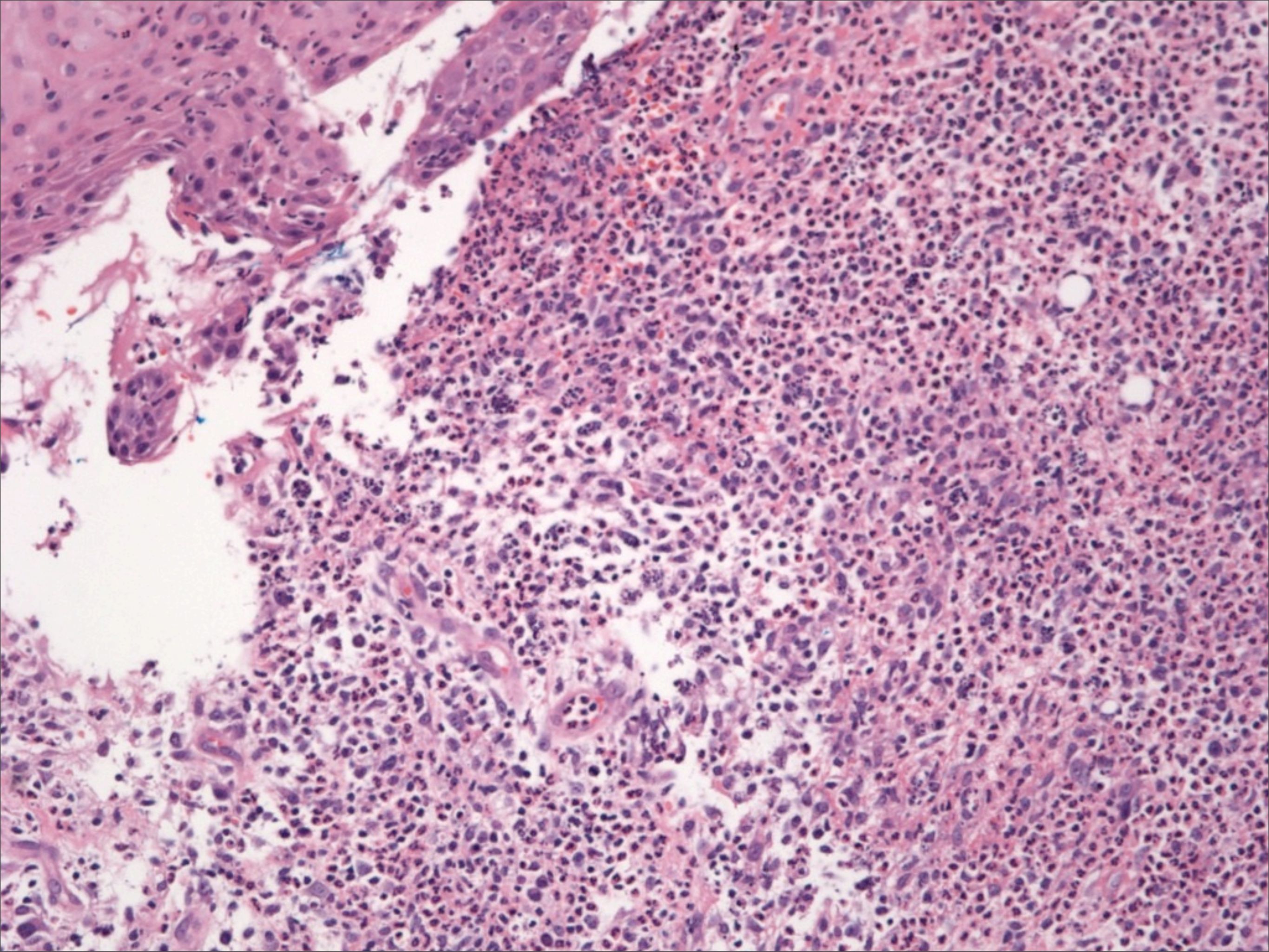
Dermatopathology

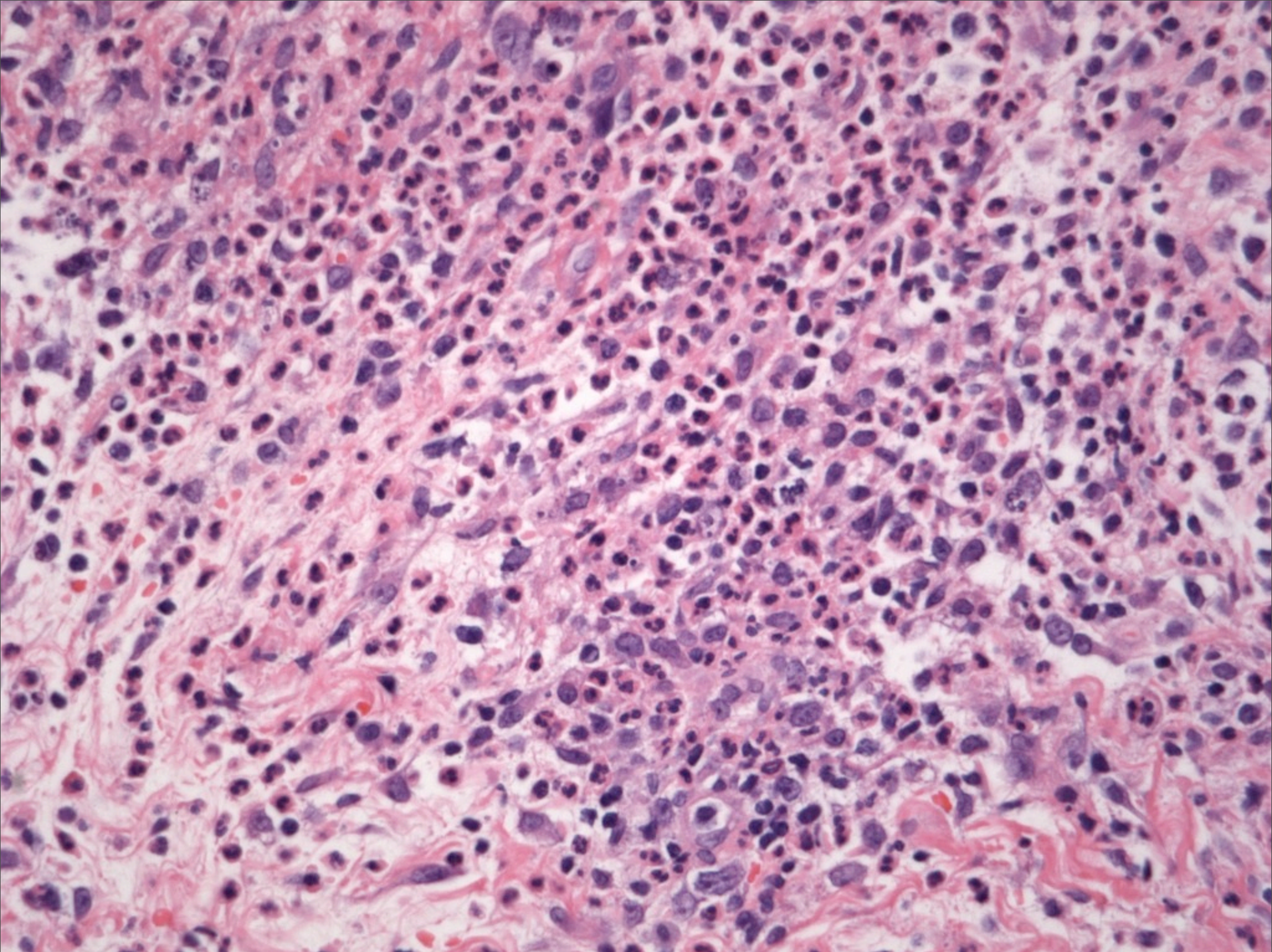
Slide Review Part 160

Paul K. Shitabata, M.D.
Dermatopathology Institute

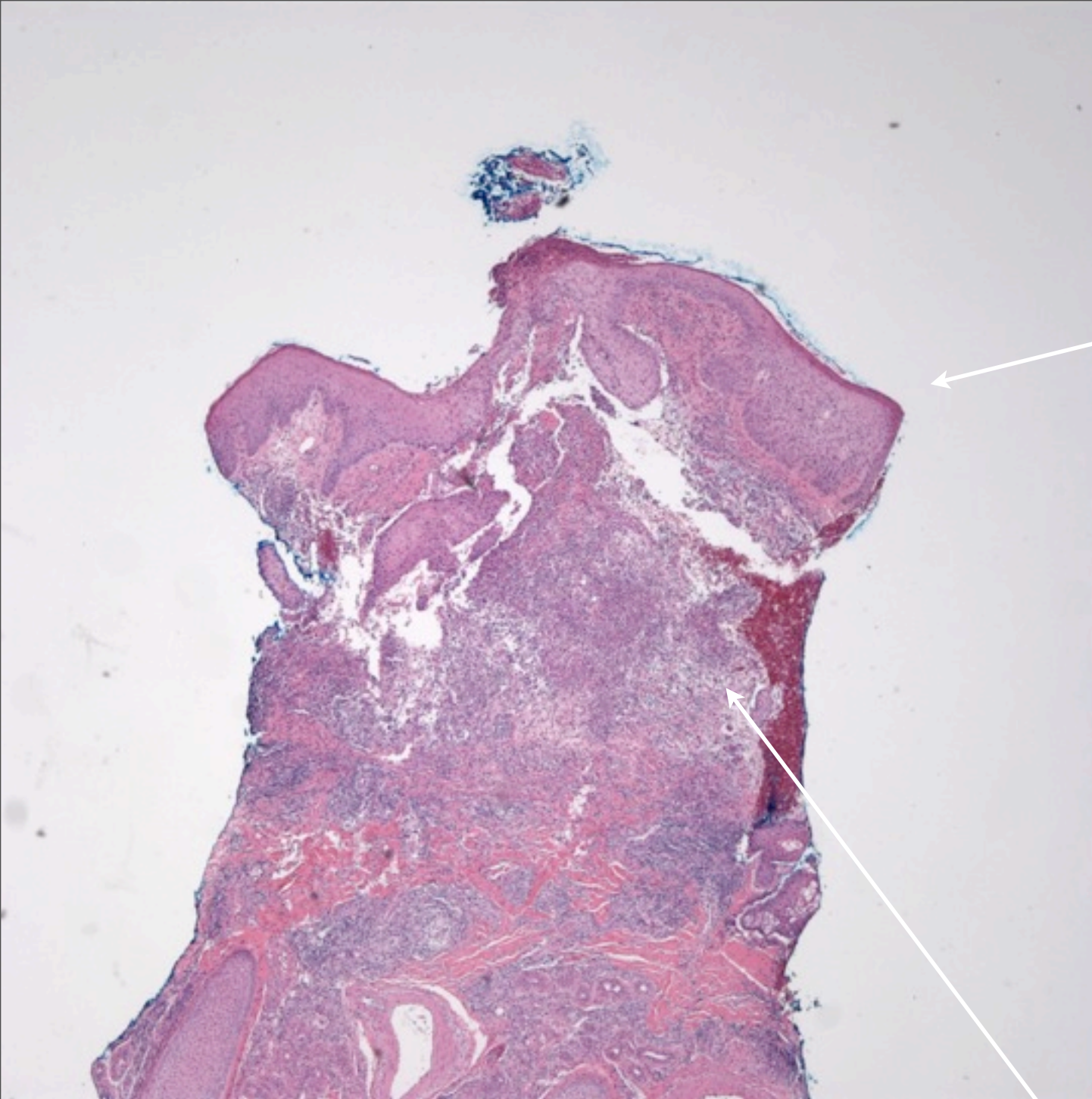








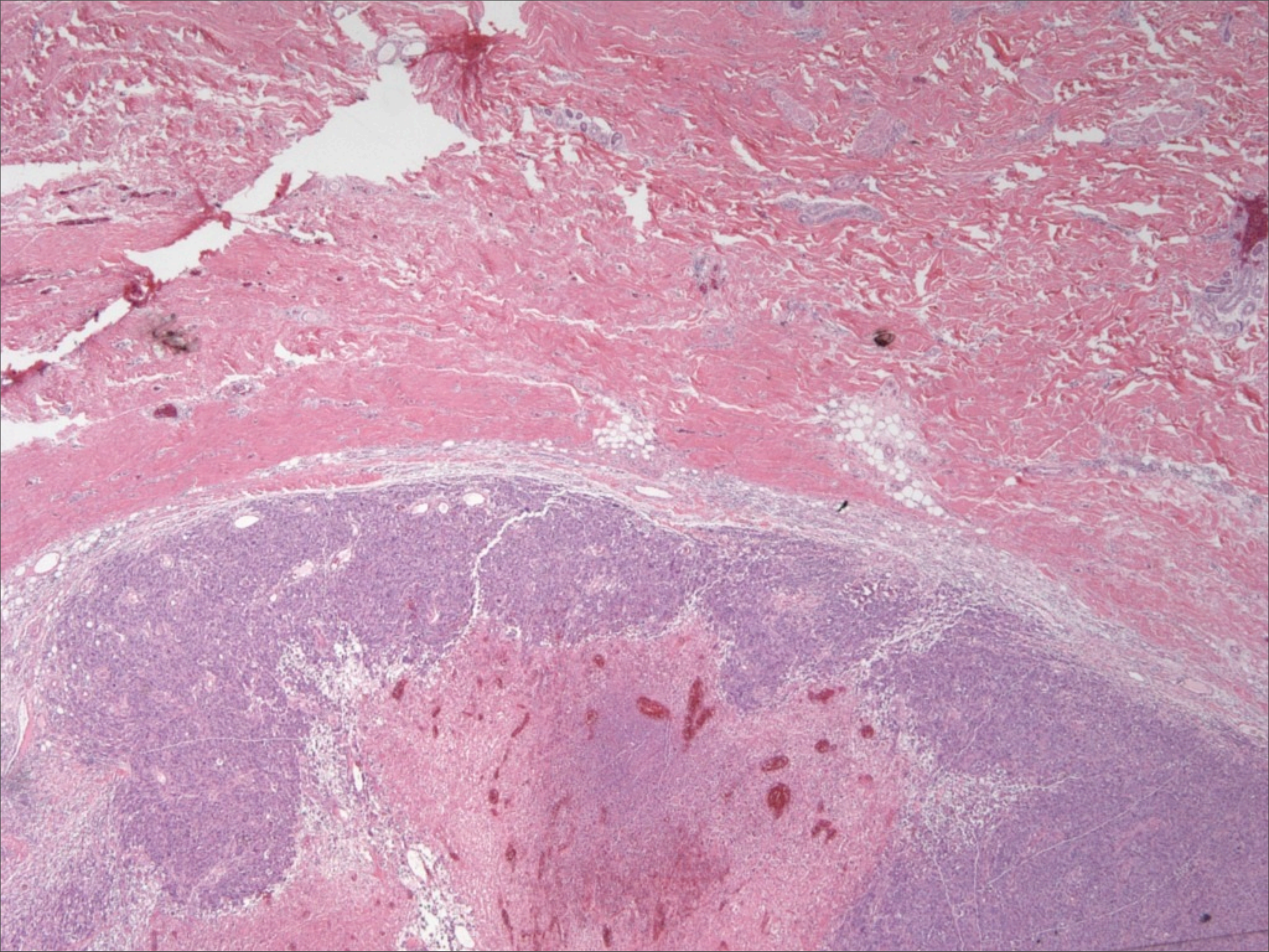
Dissecting Cellulitis of the Scalp

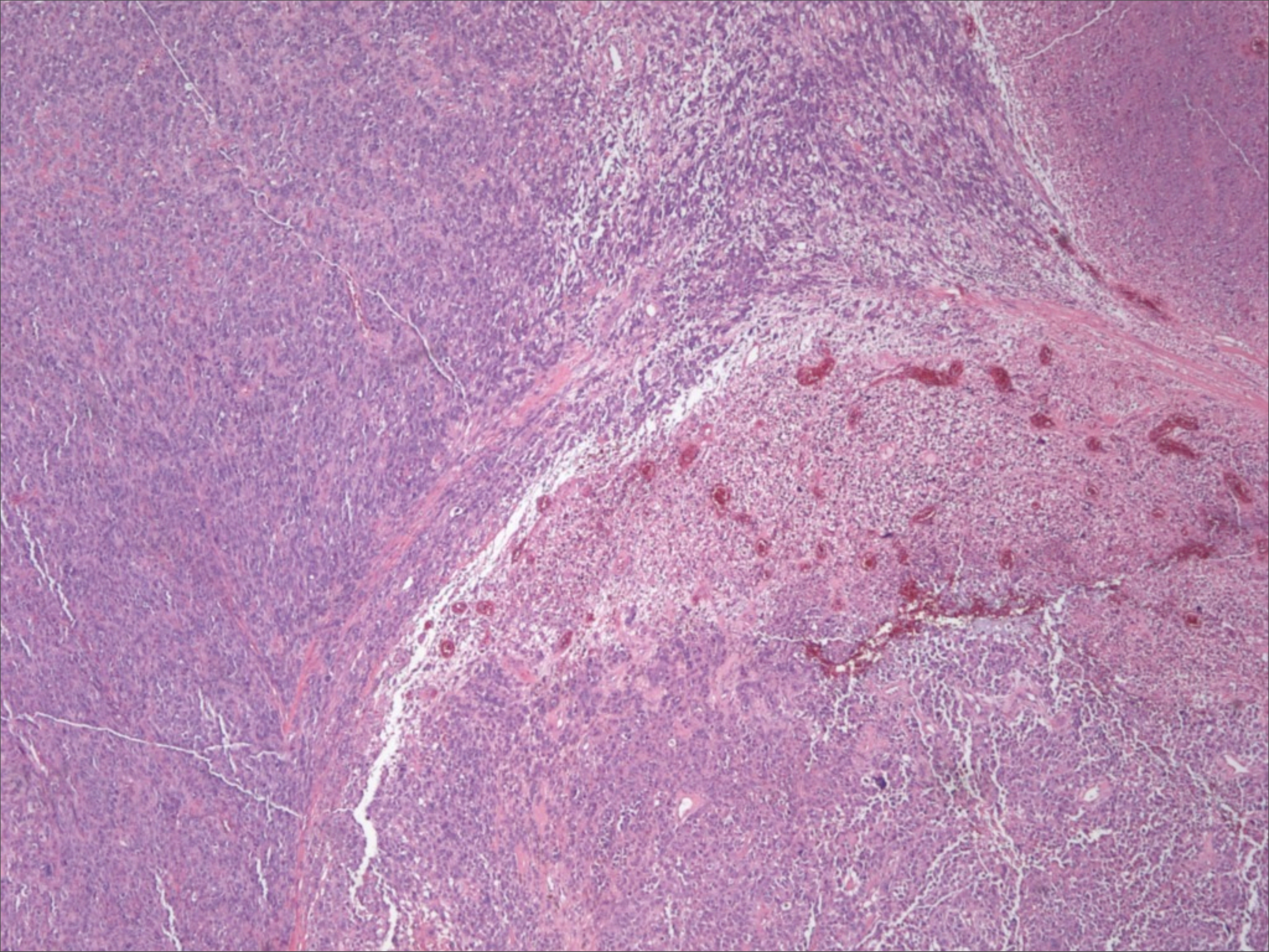


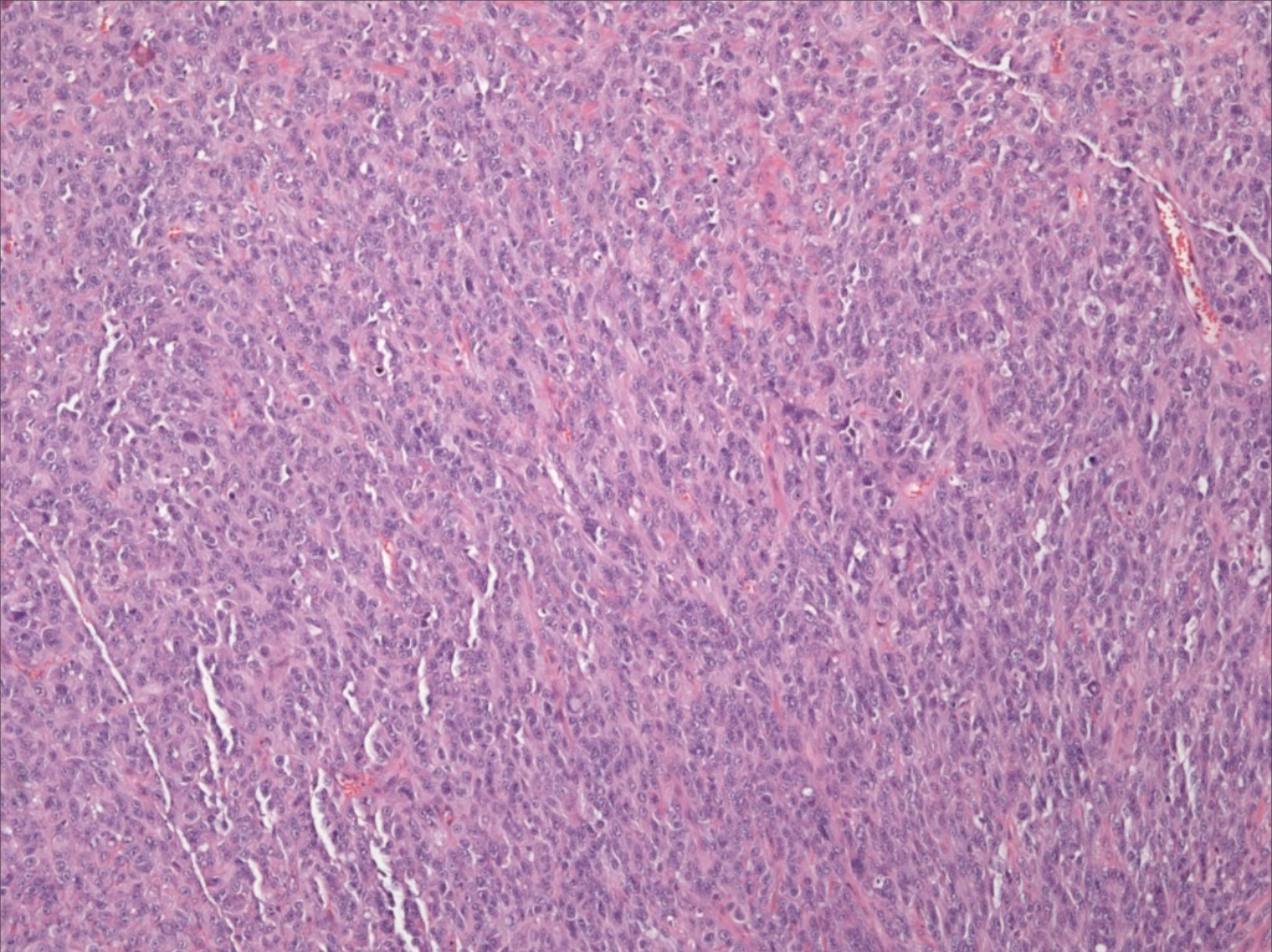
Scalp location

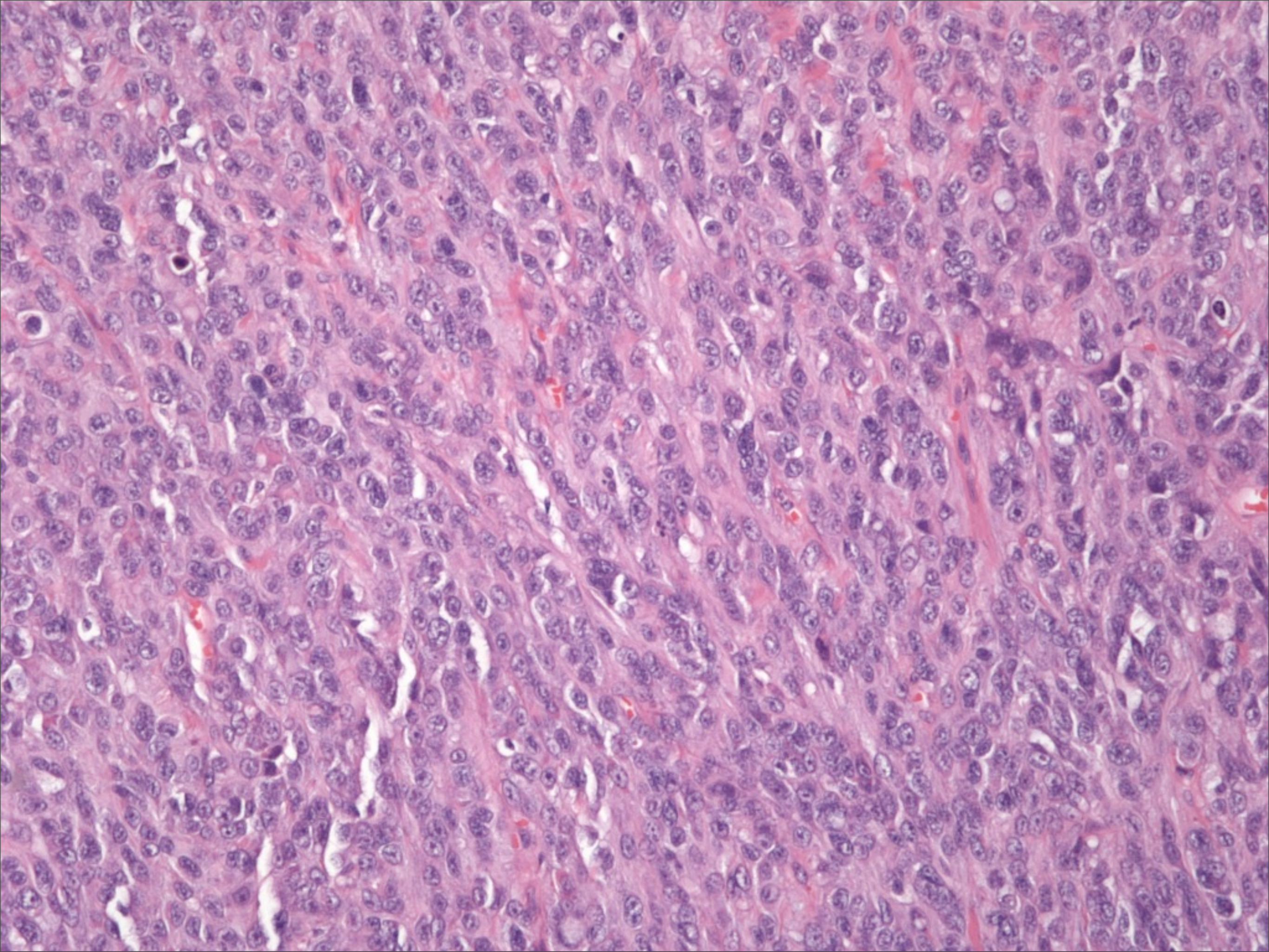
Diffuse neutrophilic infiltrate

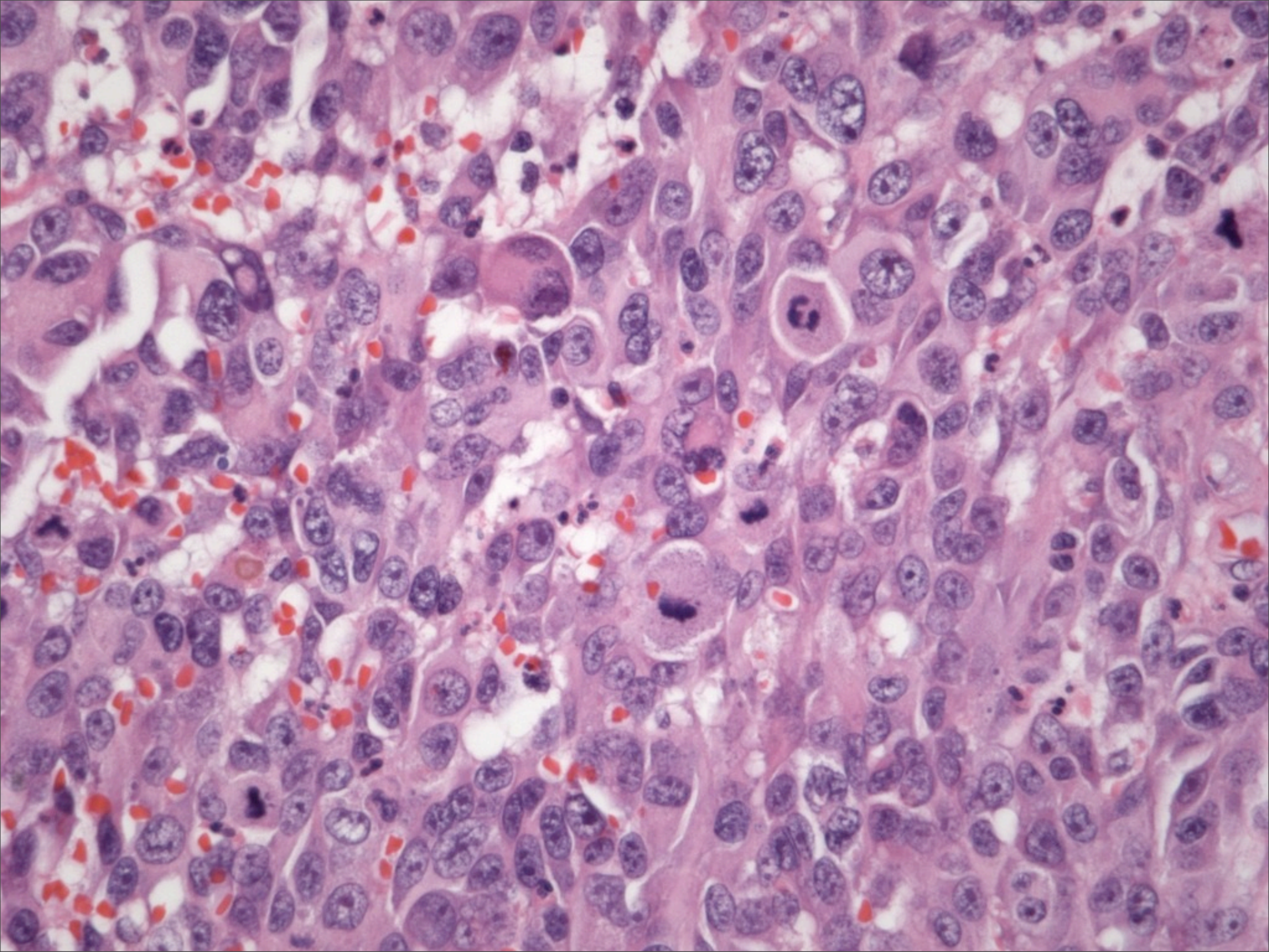
Rule out infection



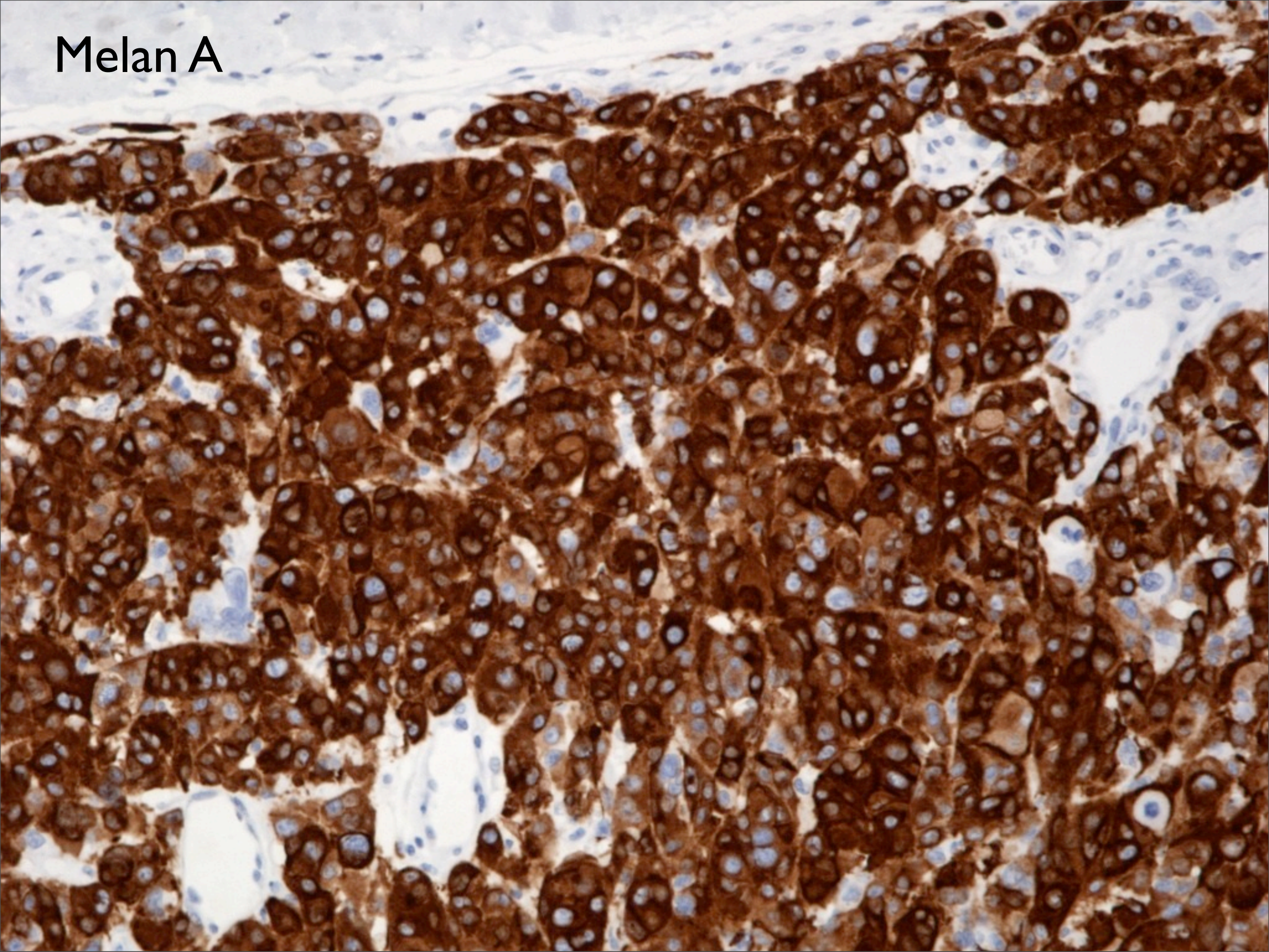




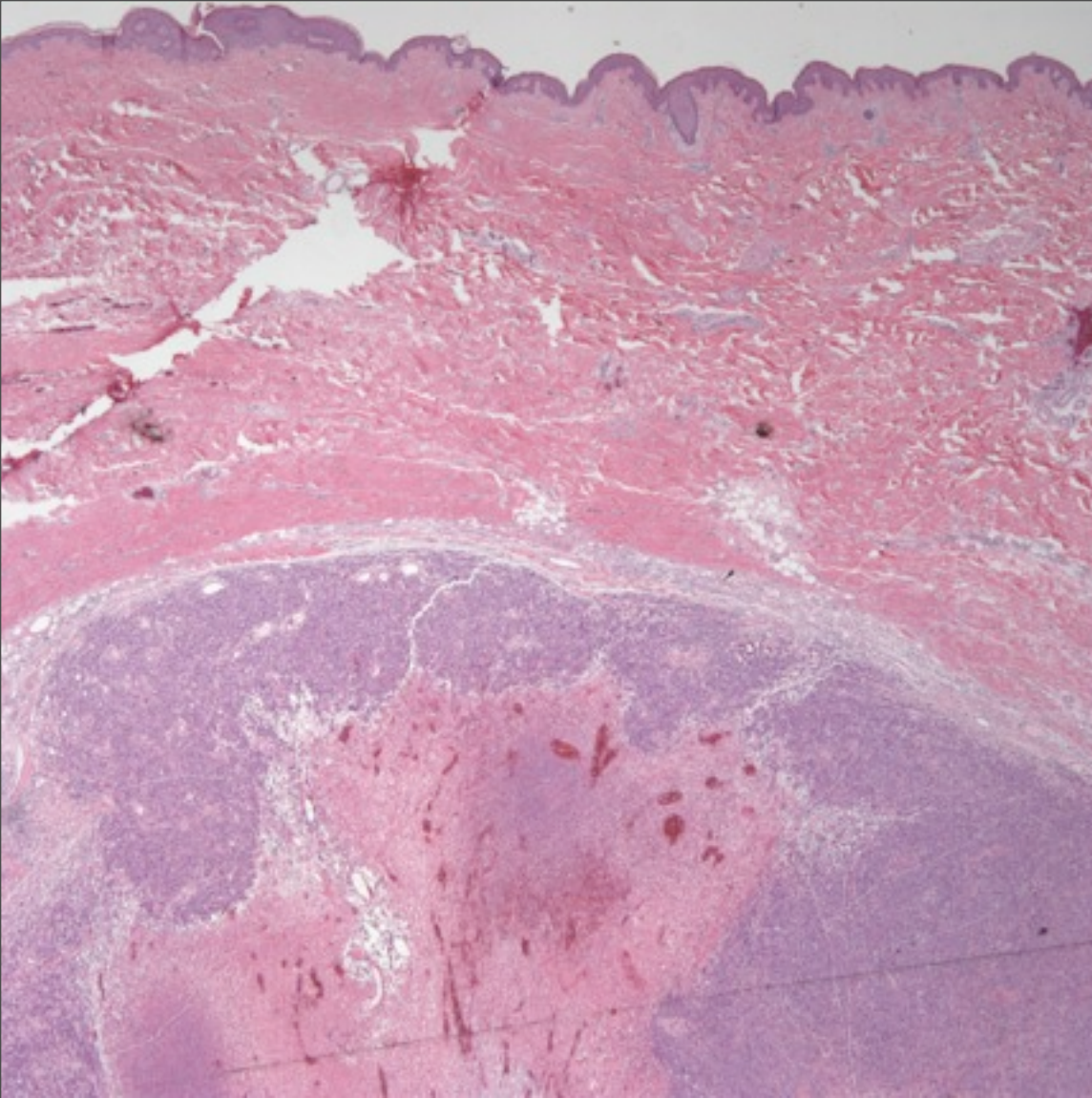




Melan A



Metastatic Amelanotic Melanoma



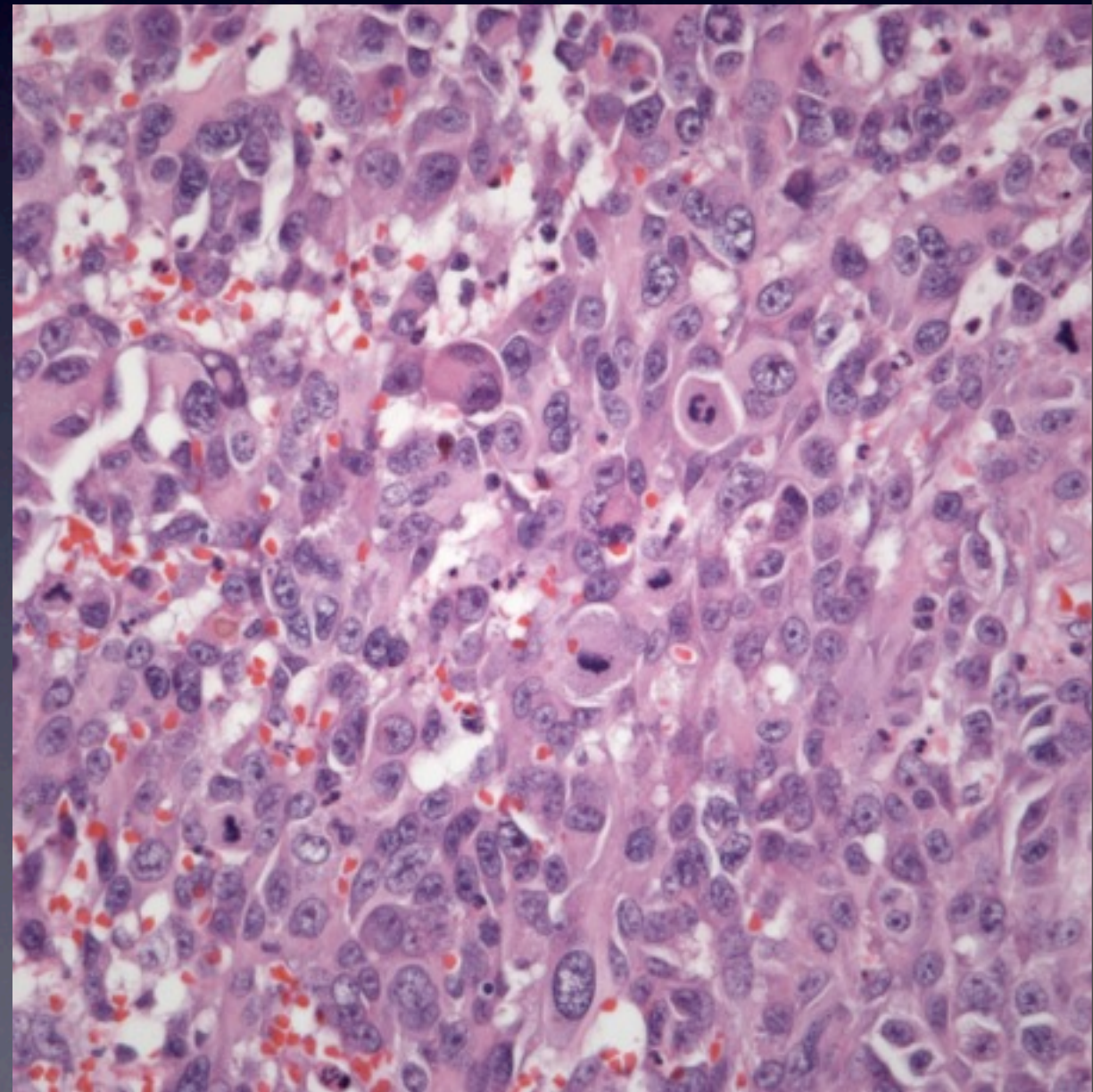
Dermal location with no
junctional changes

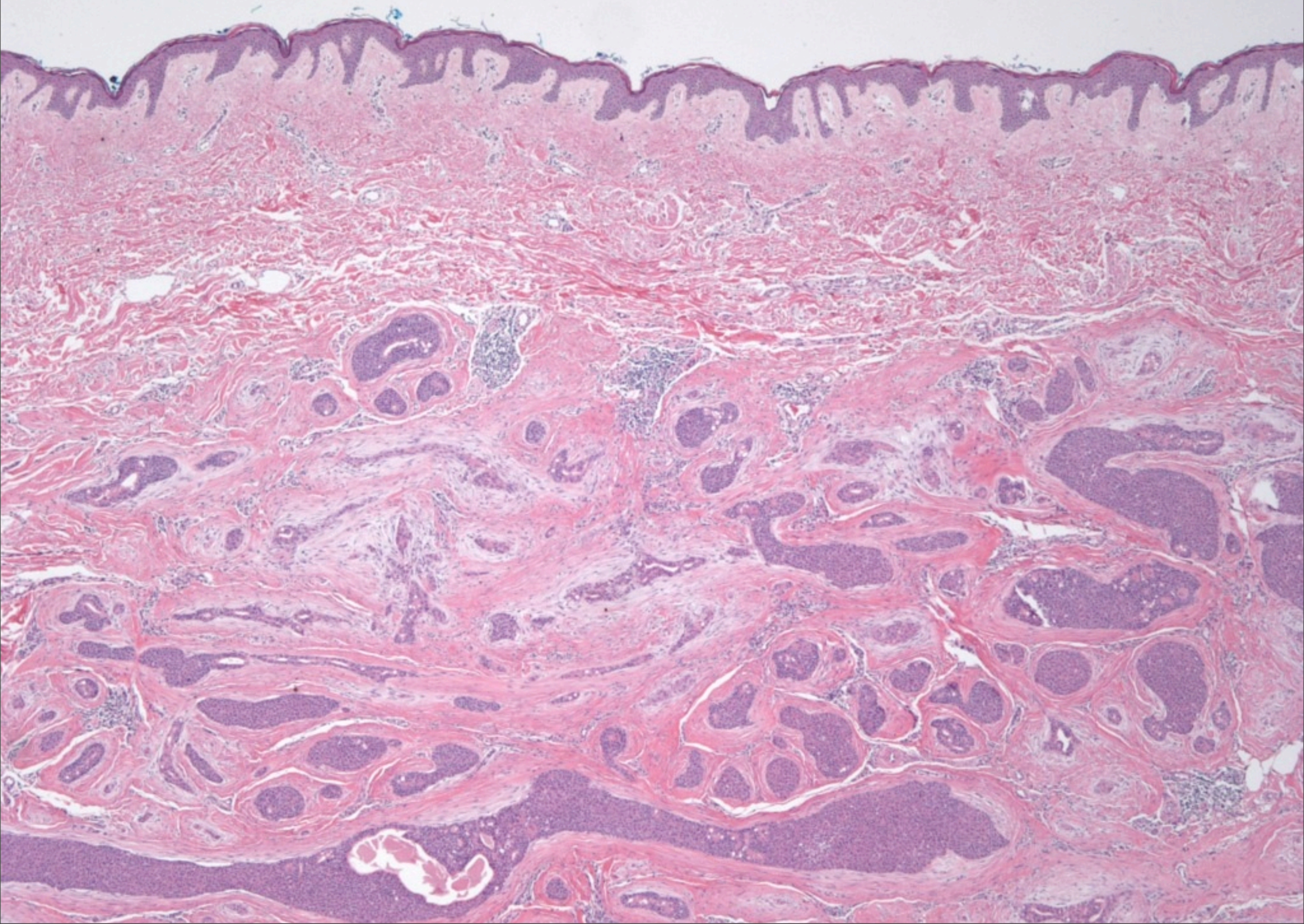
Lymphovascular invasion common

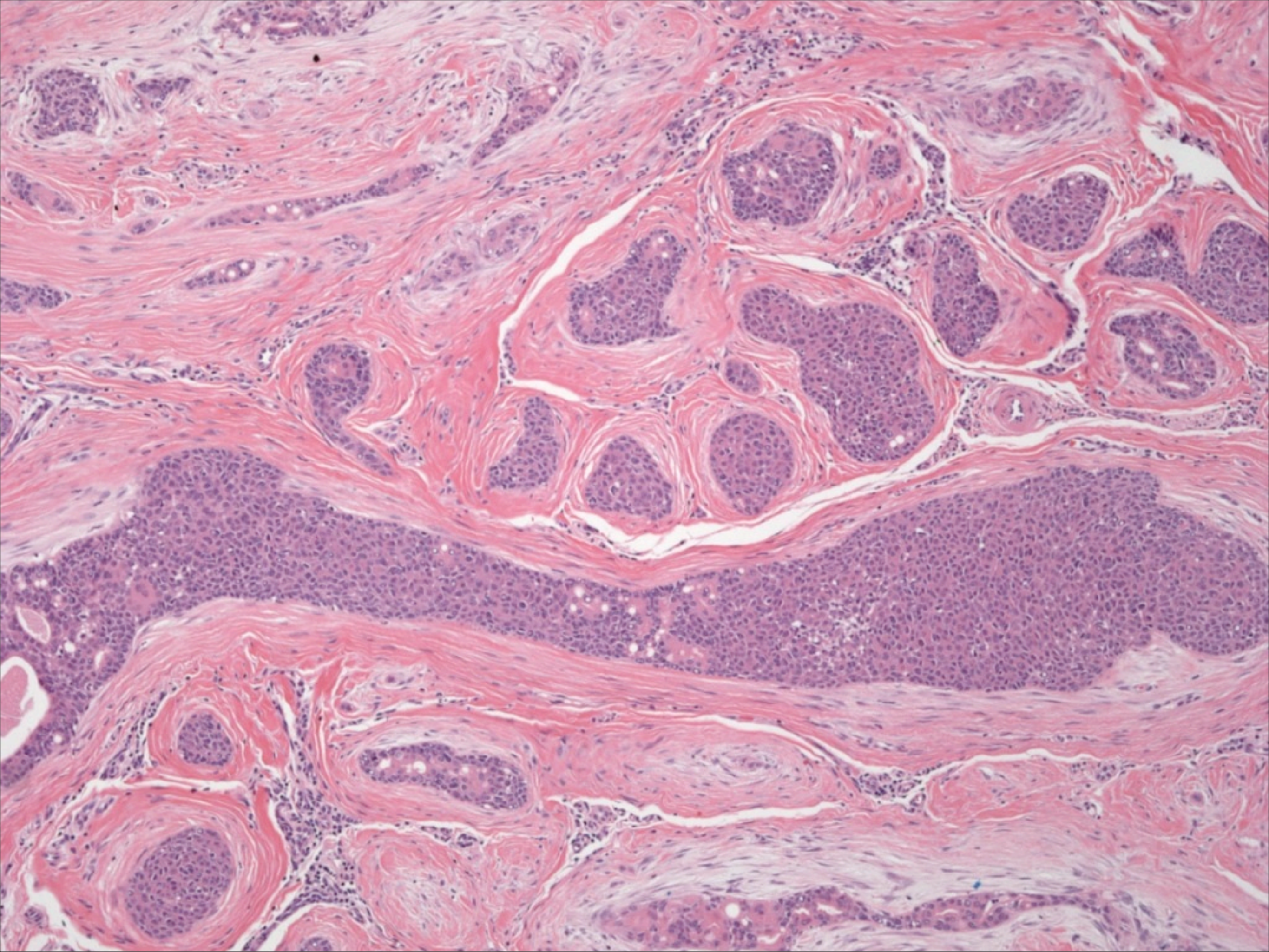
Pleomorphic cells lacking
melanin pigmentation

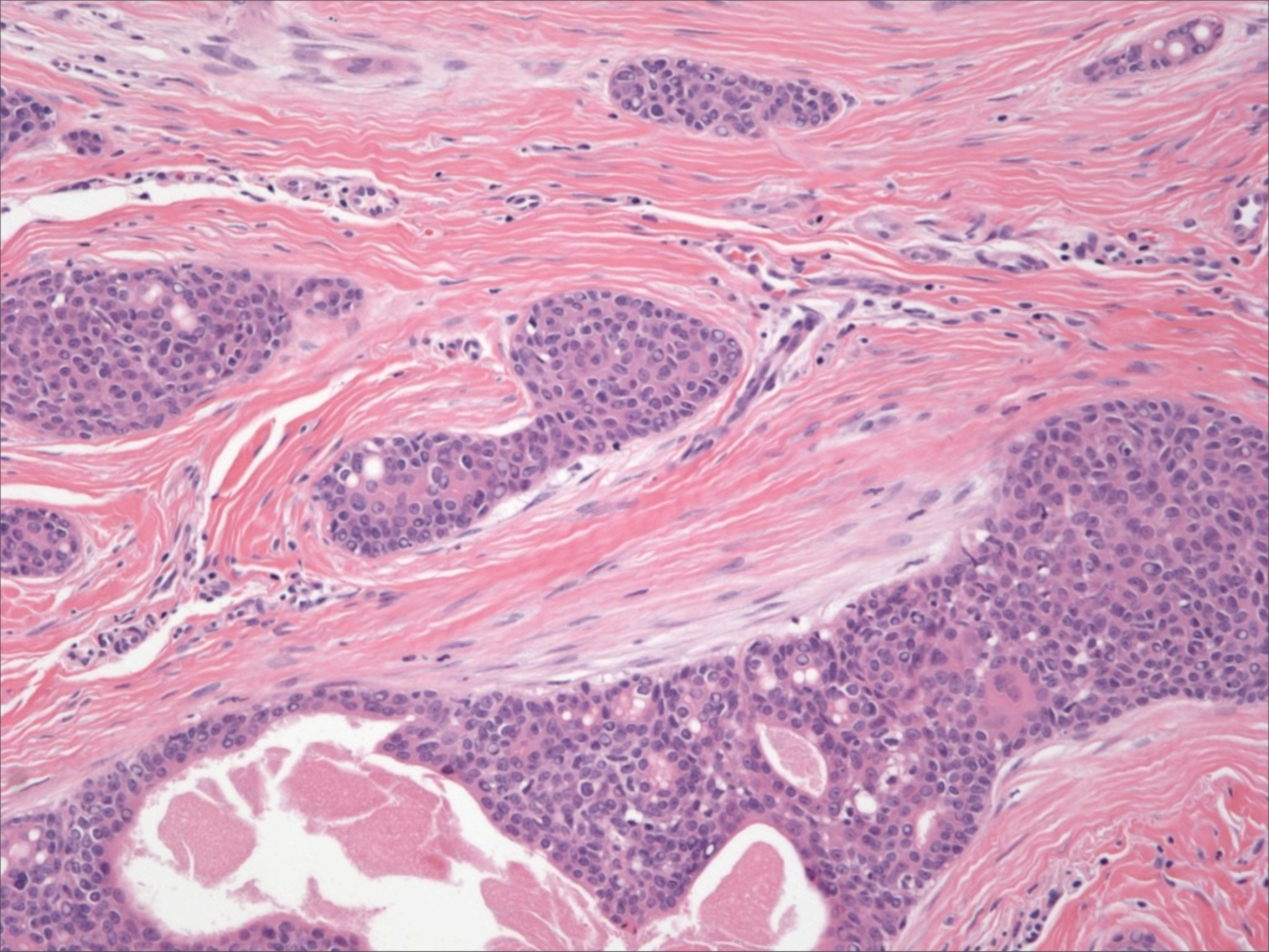
Confirm with IHC

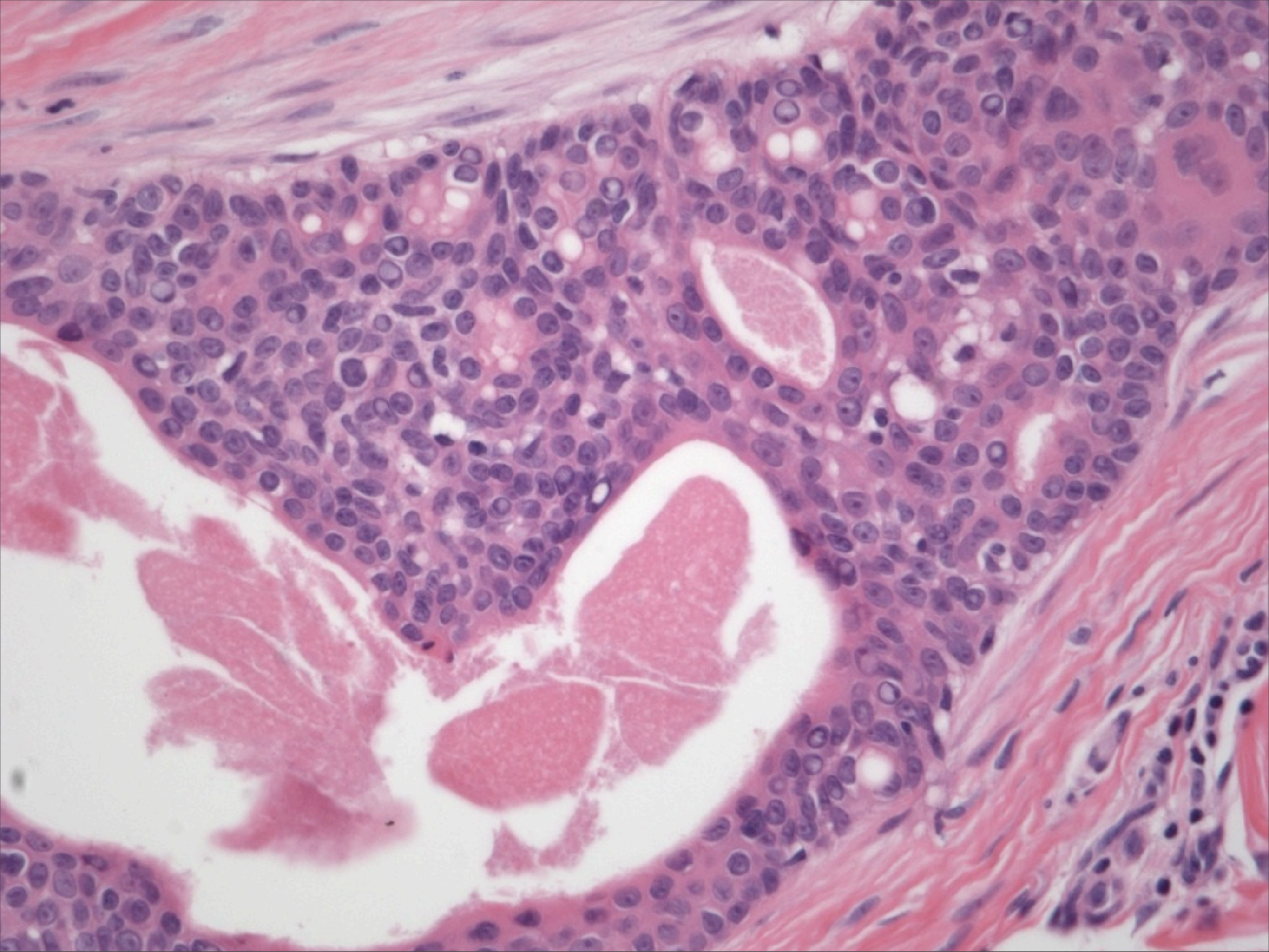
DDX: Metastatic CA,
lymphoma, sarcoma



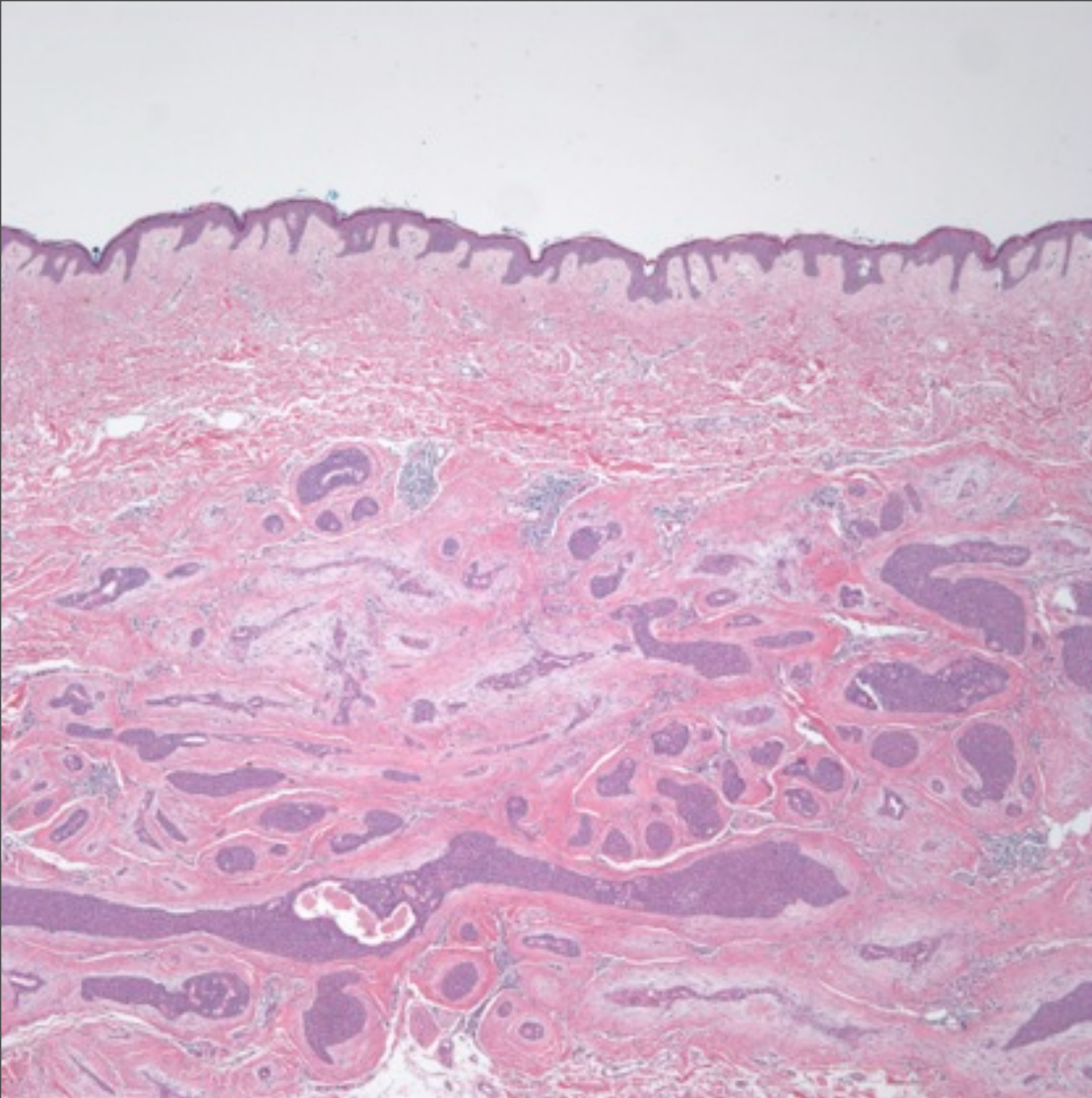




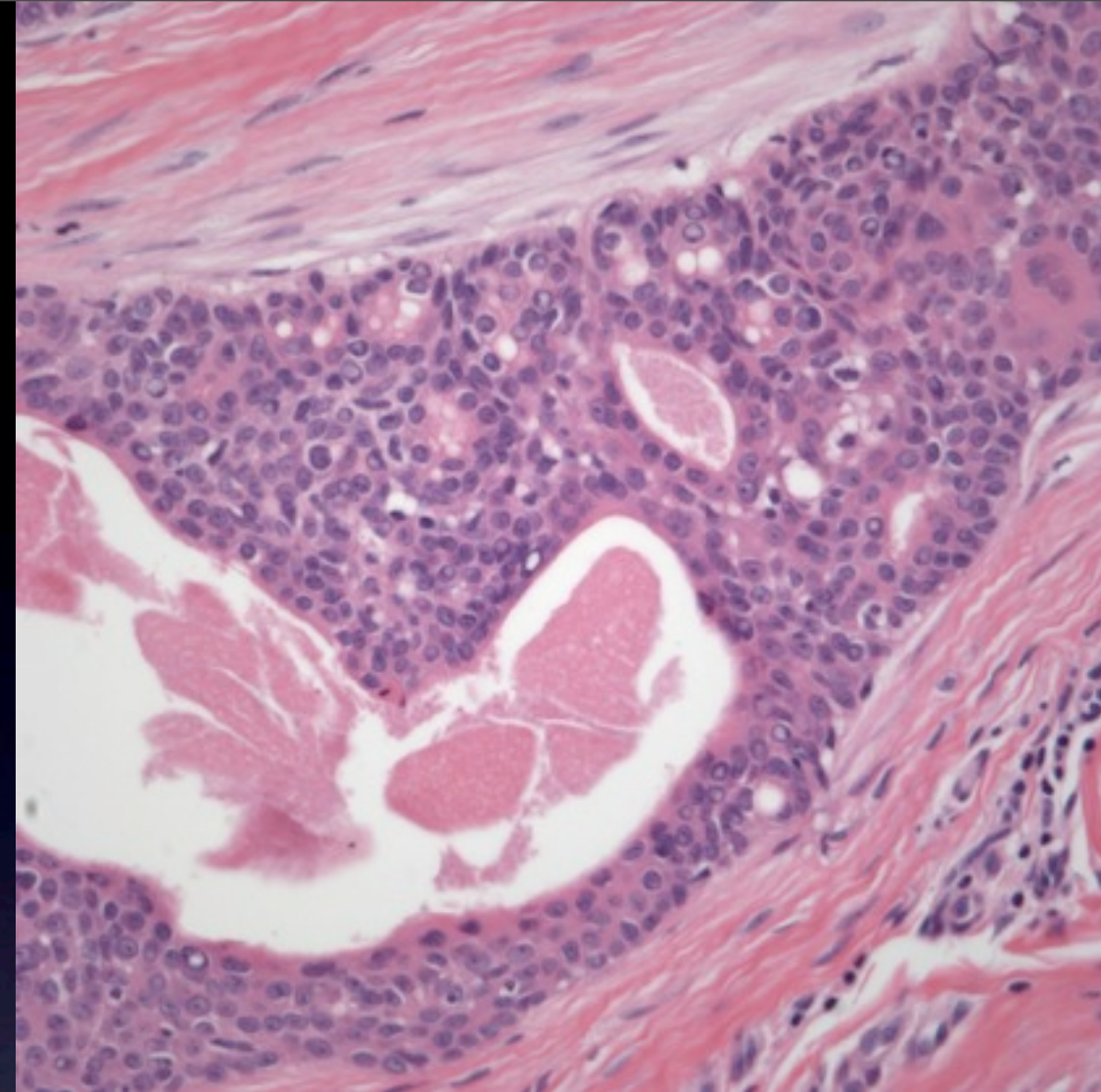




Porocarcinoma



Infiltrative dermal
neoplasm



Squamous epithelial cells with
ductal differentiation

Variable cytologic atypia